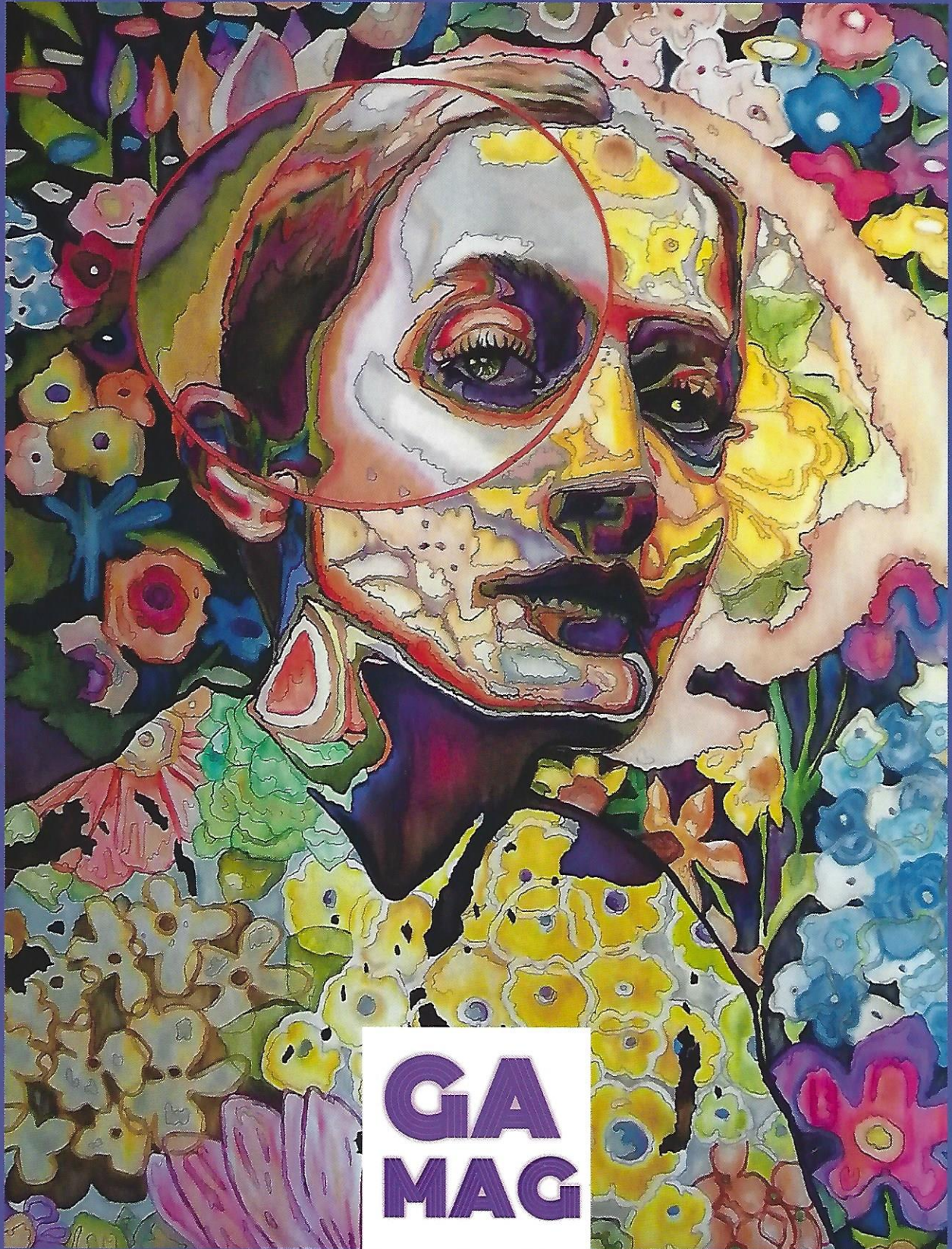


GODDESSARTS MAGAZINE

ART MAGAZINE  
ISSUE 2

NOVEMBER/DECEMBER 2021



**GA  
MAG**



**About the Goddessarts Magazine (1)**

**Artists:**

**Saki Yokoyama (3)**

**Anina Deetlefs (4)**

**Suzan Globus (6)**

**Vian Borchert (7)**

**Maria Linares Freire (8)**

**Molly Lastra (10)**

**Cara Roberts (11)**

**Anne Wölk (12)**

**Jordana Rae Gassner (14)**

**Abi Agbede (15)**

**Ava Chiba (16)**

**Danielle Rackowski (18)**

**Lena Snow (20)**

**Ilze Egle (21)**

**Cheryl Pruys (22)**

**Sally Driver (24)**

**Jenna Strouth (25)**

**Hannah Williams (26)**

**Article by Caren Jo Shapiro (28)**

special credits: Anina Deetlefs (front cover), Anne Wölk (back cover), Saki Yokoyama (inner front cover), Jenna Strouth (inner back cover), table of contents (Suzan Globus)

## Suzan Globus

*"Do women have to be naked to get into the Met Museum?"*

Guerilla Girls, 1984

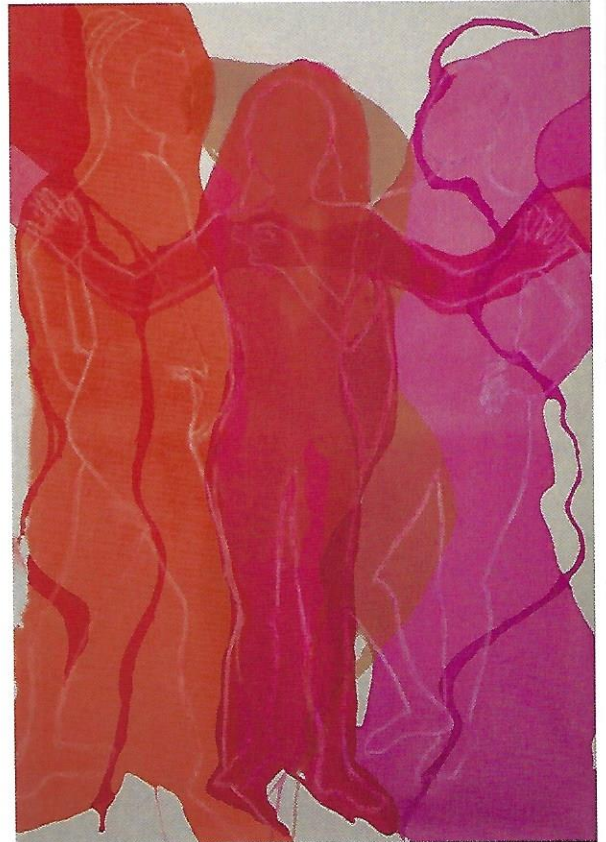
Not much has changed since these artist activists protested the lack of women artists in museum collections. Society continues to define women narrowly with strict expectations of acceptable behavior, intellectual ability and physical attributes.



I painted a series of contemporary female figures in casual, confident stances to depict females in a positive manner.

To prepare, I researched images of women using descriptive words like, "strong". That yielded female professional athletes. When I used "confident woman" to search, I saw a limited number of images of women in business suits behind podiums. My continued research confirmed my conviction that society's narrow definition and depiction of women needs expanding.

I resorted to taking hundreds of photographs of myself in various positions that I felt conveyed, strength, poise, elegance, confidence, or empathy to use as a model for these figures. I drew silhouettes to show an inclusive array of anonymous, yet familiar, females. Each work includes stylized figures drawn to reflect women of different sizes, life stages and cultures. I hope all who see them will identify a part of themselves that reflects a positive female attribute.



<https://www.instagram.com/suzan.globus/?hl=en> <https://www.facebook.com/suzan.globus.75/>